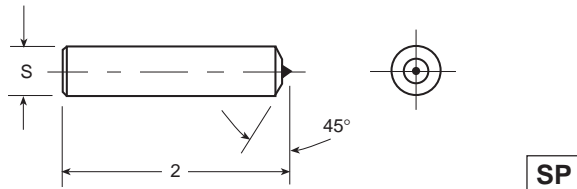
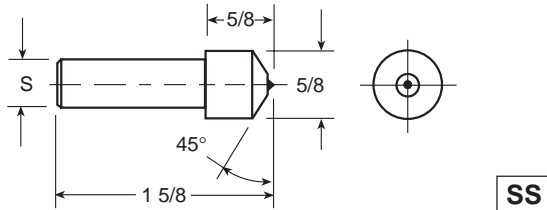


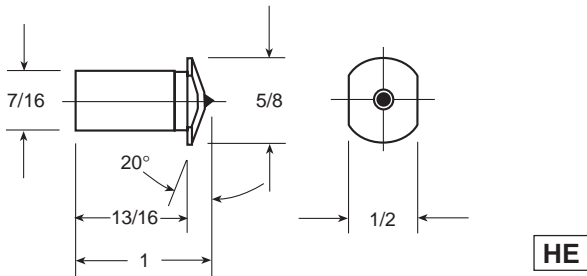
SINGLE POINT DIAMOND DRESSERS



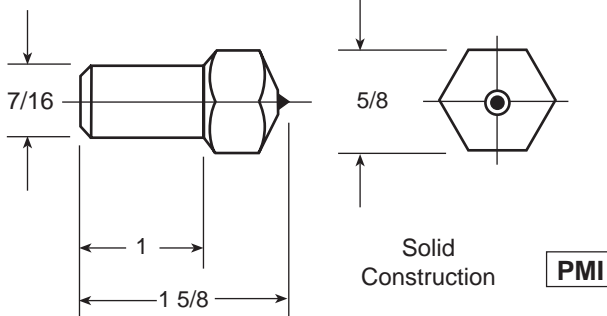
SP



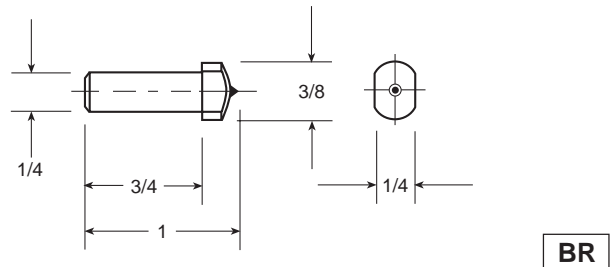
SS



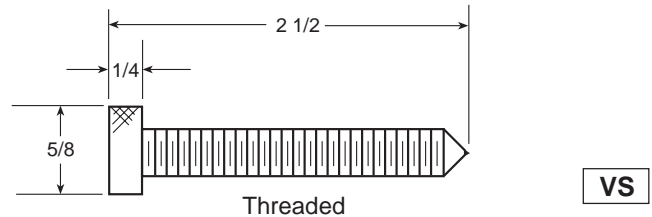
HE



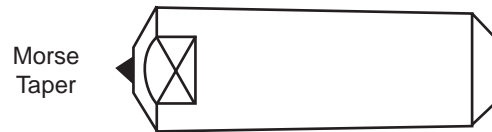
PMI



BR



VS



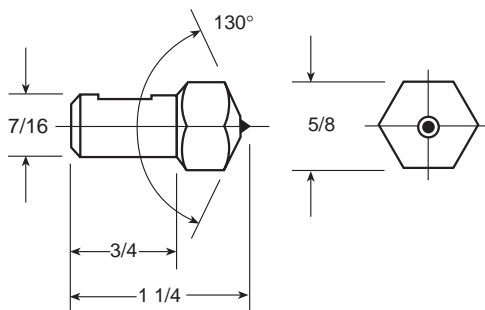
MT

HOW TO ORDER

SP **3** **C** **7**
 Shank Type Diamond Size/Carat Weight Diamond Grade Shank 1 = to print
 2 = 1/8
 3 = 3/16
 4 = 1/4
 5 = 5/16
 6 = 3/8
 7 = 7/16
 8 = 1/2

Dia.	Weight
1	= .20 ct
2	= .25
3	= .33
4	= .50
5	= .75
6	= 1.00
7	= 1.25
8	= 1.50
9	= 1.75
10	= 2.00

TWIST-A-DRESSERS

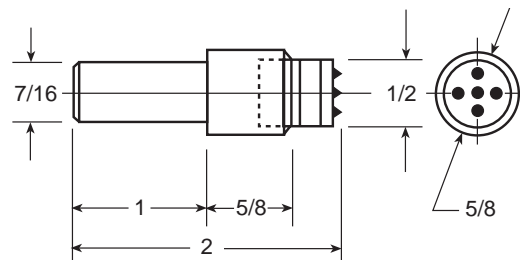


Hex head will index independent of shank. This enables diamond to be rotated without loosening the tool from the machine. This encourages the operator to index the diamond, thereby increasing diamond life and reducing down time.

HOW TO ORDER

TAD **5** **B** **7**
 Shank Type Diamond Size Diamond Grade Shank Diameter

THREE LAYER CLUSTERS



3 Layered cluster tool having 5 stones per layer.

Many stones do the work rather than a large, more costly single point stone. Diamond wears away until entire tool is consumed for maximum economy and efficiency.

Tool #	Caret Weight
CL23L	2.00
CL33L	3.00
CL43L	4.00
CL53L	5.00