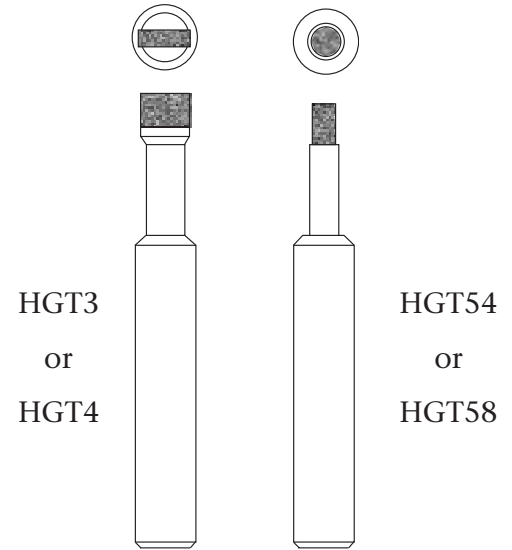


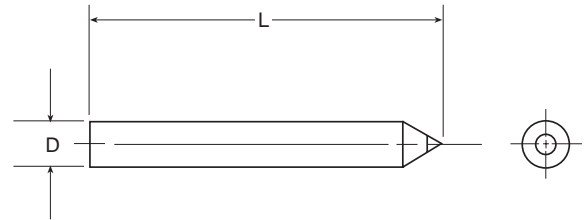
OFF HAND DRESSER

TOOL #	DIAMOND SELECTION	DIAMOND DEPTH
HGT3	1/2 x 1/4	3/8"
HGT4	3/4 x 1/4	3/8
HGT54	1/4 Round	5/16
HGT58	1/2 Round	3/8

Shank Diameter 5/8"
O.A.L. = 8"



PHONO POINTS



ANGLE	DIA. SIZE NO.	SHANK SIZE	
		Inch	Metric
60	30	.081	1 or 2
		1/8	3
		3/16	4
		1/4	5 or 6
	40	.081	1 or 2
		1/8	3
50	3/16	4	
	1/4	5	
	.081	3 - 6	
60	.081	1/8	3 - 6
		3/16	
	1/4		
	1/4		
70	.081	1/8	3 - 6
		3/16	
	1/4		
	1/4		
75	30	.081	1 or 2
		1/8	3
		3/16	4
		1/4	5 or 6
	40	.081	1 or 2
		1/8	3
50	3/16	4	
	1/4	5	
50	.081	3-6	
	1/8		
	3/16		
50	1/4	.081	
		1/8	
		3/16	

ANGLE	DIA. SIZE NO.	SHANK SIZE	
		Inch	Metric
60	.081	1/8	3-6
		3/16	
		1/4	
		1/4	
70	.081	1/8	3-6
		3/16	
		1/4	
		1/4	
90	30	.081	1-2
		1/8	3
		3/16	4
		1/4	5-6
	40	.081	1-2
		1/8	3
50	3/16	1/4	5-6
		1/4	
	.081	3-6	
	1/8		
60	.081	1/8	3-6
		3/16	
	1/4		
	1/4		
70	.081	1/8	3-6
		3/16	
	1/4		
	1/4		

HOW TO ORDER

Tool # PP B - 2 40

Angle
B=60
C=75
D=90

Shank Diameter
2=1/8
3=3/16
4=1/4
1" long standard length

Diamond Size
30-(Standard Duty)
40-(Heavy Duty)
50
60
70

DIAMOND SIZE: Finished Stone
Base of Diamond

30 = .022 to .030
40 = .032 to .040
50 = .042 to .050
60 = .052 to .060
70 = .062 to .070