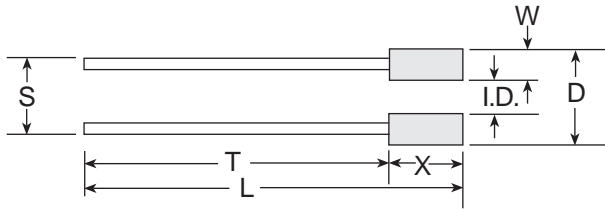
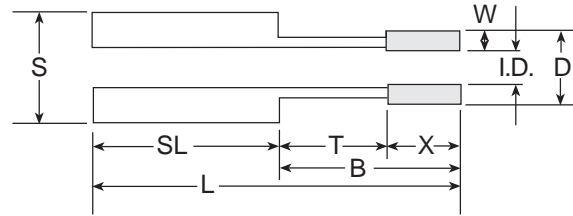


METAL BOND DIAMOND CORE DRILL

For making holes outside diameter critical.



SHANK TYPE: UT



SHANK TYPE: OT

Diameter		Approx. Wall Thickness	Collet Size	Outside Diameter Critical	Inside Diameter Critical
Fractional	Decimal				
3/64"	.046	.012	1	SCD.046	ICD.046
	.050	.015		SCD.050	ICD.050
	.055	.015		SCD.055	ICD.055
1/16	.062	.018		SCD.062	ICD.062
	.070	.020		SCD.070	ICD.070
5/64	.078	.020		SCD.078	ICD.078
	.085	.020		SCD.085	ICD.085
3/32	.093	.020		SCD.093	ICD.093
7/64	.109	.025		SCD.109	ICD.109
1/8	.125	.032		SCD.125	ICD.125
	.130	.032		SCD.130	ICD.130
9/64	.140	.032		SCD.140	ICD.140
5/32	.156	.032		SCD.156	ICD.156
3/16	.188	.032		SCD.188	ICD.188
7/32	.219	.032		SCD.219	ICD.219
1/4	.250	.032		SCD.250	ICD.250
9/32	.281	.032	SCD.281	ICD.281	
5/16	.312	.032	SCD.312	ICD.312	
11/32	.344	.032	SCD.344	ICD.344	
3/8	.375	.032	SCD.375	ICD.375	
13/32	.406	.032	SCD.406	ICD.406	
7/16	.438	.032	SCD.469	ICD.469	
1/2	.500	.032	SCD.500	ICD.500	
9/16	.562	.037	2	SCD.562	ICD.562
5/8	.625	.037		SCD.625	ICD.625
11/16	.688	.037		SCD.688	ICD.688
3/4	.750	.037		SCD.750	ICD.750
13/16	.813	.037		SCD.813	ICD.813
7/8	.875	.037		SCD.875	ICD.875
15/16	.938	.037		SCD.938	ICD.938
1	1.000	.037		SCD1.000	ICD1.000
1-1/16	1.063	.037		SCD1.063	ICD1.063
1-1/8	1.125	.037		SCD1.125	ICD1.125
1-3/16	1.188	.037		SCD1.188	ICD1.188
1-1/4	1.250	.037		SCD1.250	ICD1.250
1-5/16	1.312	.037		SCD1.312	ICD1.312
1-3/8	1.375	.037		SCD1.375	ICD1.375
1-7/16	1.438	.037		SCD1.438	ICD1.438
1-1/2	1.500	.042		SCD1.500	ICD1.500

Diameter		Approx. Wall Thickness	Collet Size	Outside Diameter Critical	Inside Diameter Critical
Fractional	Decimal				
1-9/16	1.562	.042	2	SCD1.562	ICD1.562
1-5/8	1.625	.042		SCD1.625	ICD1.625
1-11/16	1.688	.042	3	SCD1.688	ICD1.688
1-3/4	1.750	.042		SCD1.750	ICD1.750
1-13/16	1.813	.042		SCD1.813	ICD1.813
1-7/8	1.875	.042		SCD1.875	ICD1.875
1-15/16	1.938	.042		SCD1.938	ICD1.938
2	2.000	.042		SCD2.000	ICD2.000
2-1/8	2.125	.048	3	SCD2.125	ICD2.125
2-1/4	2.250	.048		SCD2.250	ICD2.250
2-3/8	2.375	.048		SCD2.375	ICD2.375
2-1/2	2.500	.048		SCD2.500	ICD2.500
2-5/8	2.625	.048	4	SCD2.625	ICD2.625
2-3/4	2.750	.048		SCD2.750	ICD2.750
2-7/8	2.875	.048		SCD2.875	ICD2.875
3	3.000	.052		SCD3.000	ICD3.000
3-1/8	3.125	.052	3	SCD3.125	ICD3.125
3-1/4	3.250	.052		SCD3.250	ICD3.250
3-3/8	3.375	.052		SCD3.375	ICD3.375
3-1/2	3.500	.052	SCD3.500	ICD3.500	
3-5/8	3.625	.052	4	SCD3.625	ICD3.625
3-3/4	3.750	.052		SCD3.750	ICD3.750
3-7/8	3.875	.052		SCD3.875	ICD3.875
4	4.000	.052		SCD4.000	ICD4.000