

HOLE SAW ARBORS

CATALOG NUMBER	FITS HOLE SAW DIA.	SCREW THREAD	SHANK SIZE	CHUCK SIZE
HHS-A1	9/16 to 1 3/16"	1/2 - 20	11/32 Hex.	3/8"
HHS-A4	9/16 to 1 3/16	1/2 - 20	1/4 Round	1/4
HHS-A10	1 1/4 to 6	5/8 - 18	11/32 Hex.	3/8
HHS-A2	1 1/4 to 6	5/8 - 18	7/16 Hex.	1/2



HHS-A1



HHS-A4

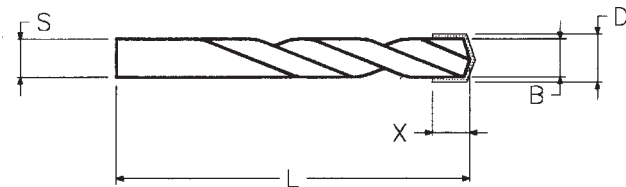


HHS-A10



HHS-A2

DIAMOND PLATED TWIST DRILLS



TOOL #	DRILL DIAMETERS
TD	.030 - .180
TD	.181 - .238
TD	.239 - .302
TD	.303 - .368
TD	.369 - .404
TD	.405 - .453
TD	.454 - .511

TOOL #	DRILL DIAMETERS
TD	.512 - .590
TD	.591 - .640
TD	.642 - .734
TD	.735 - .797
TD	.798 - .859
TD	.860 - .906
TD	.907 - 1.000

HOW TO ORDER

TD.500 40-50
Tool # Drill Size Grit Size

Standard Grit Size:

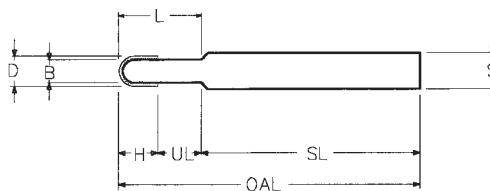
.030 - .180 = 100 - 120 Grit
 .181 - .238 = 60 - 80 Grit
 Other = 40 - 60 Grit

Other Grit sizes upon request.

Drill Length

Standard jobber drills are used for sizes up to 1/2". Over 1/2" sizes, Silver and Demming drills are used having 1/2" shank size. For other lengths, please inquire.

DIAMOND PLATED BALL END DRILLS



TOOL #	D	L	S	OAL	GRIT SIZE
PBD	.030 - .049	3/8	1/8	2 1/2	100-120
PBD	.050 - .125	1/2	1/8	2 1/2	80-100
PBD	.126 - .187	1"	3/16	2 1/2	60-80
PBD	.188 - .250	1"	1/4	2 1/2	50-60
PBD	.251 - .375	1"	3/8	2 1/2	40-50

HOW TO ORDER

PBD.250 50/60
Tool # and Size Grit Size

All sizes, grit sizes, depth of cut and shank sizes can be changed. Please specify.