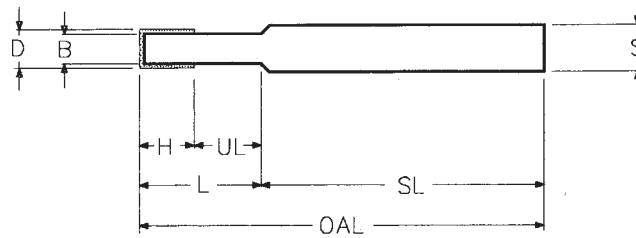


PLATED DIAMOND & CBN GRINDING PINS

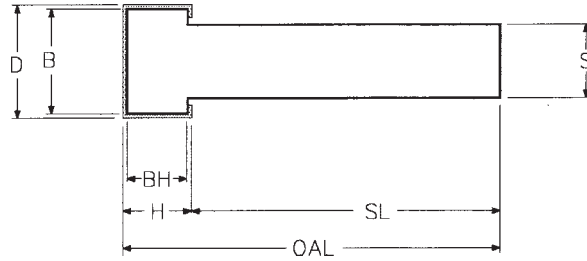
.035 through .187

Ball End Drill
1/8" Shank
2" OAL

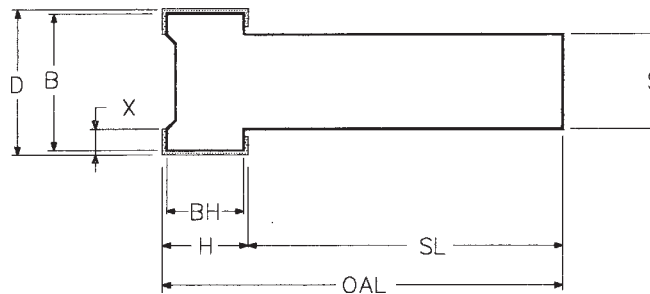


CBN TOOL NO.	DIAMOND TOOL NO.	(D) HEAD DIA.	(H) HEAD LENGTH	(L)	OAL	(S) SHANK	GRIT SIZE
EP2B20/1	EP2D-20/1	.020	1/16"	1/8"	2 1/2"	1/8"	200
EP2B25/1.5	EP2D-25/1.5	.025	3/32	1/4	2 1/2	1/8	200
EP2B30/1.5	EP2D-30/1.5	.030	3/32	1/4	2 1/2	1/8	150
EP2B35/1.5	EP2D-35/1.5	.035	3/32	1/4	2 1/2	1/8	150
EP2B40/2	EP2D-40/2	.040	1/8	3/8	2 1/2	1/8	150
EP2B45/2	EP2D-45/2	.045	1/8	3/8	2 1/2	1/8	150
EP2B50/2	EP2D-50/2	.050	1/8	3/8	2 1/2	1/8	100
EP2B50L/2	EP2D-50L/2	.050	1/8	1	2 1/2	1/8	100
EP2B55/2	EP2D-55/2	.055	1/8	3/8	2 1/2	1/8	100
EP2B60/2	EP2D-60/2	.060	1/8	1/2	2 1/2	1/8	100
EP2B60L/2	EP2D-60L/2	.060	1/8	1	2 1/2	1/8	100
EP2B65/2.5	EP2D-65/2.5	.065	5/32	1/2	2 1/2	1/8	100
EP2B70/2.5	EP2D-70/2.5	.070	5/32	1/2	2 1/2	1/8	100
EP2B70L/2.5	EP2D-70L/2.5	.070	5/32	1	2 1/2	1/8	100
EP2B75/2.5	EP2D-75/2.5	.075	5/32	1/2	2 1/2	1/8	100
EP2B80/2.5	EP2D-80/2.5	.080	5/32	1/2	2 1/2	1/8	100
EP2B80L/2.5	EP2D-80L/2.5	.080	5/32	1	2 1/2	1/8	100
EP2B85/2.5	EP2D-85/2.5	.085	5/32	1/2	2 1/2	1/8	100
EP2B90/2.5	EP2D-90/2.5	.090	5/32	1/2	2 1/2	1/8	100
EP2B90L/2.5	EP2D-90L/2.5	.090	5/32	1	2 1/2	1/8	100
EP2B95/2.5	EP2D-95/2.5	.095	5/32	1/2	2 1/2	1/8	100
EP2B100/2.5	EP2D-100/2.5	.100	5/32	1/2	2 1/2	1/8	100
EP2B100L/2.5	EP2D-100L/2.5	.100	5/32	1	2 1/2	1/8	100
EP2B105/2.5	EP2D-105/2.5	.105	5/32	1/2	2 1/2	1/8	100
EP2B105L/2.5	EP2D-105L/2.5	.105	5/32	1	2 1/2	1/8	100
EP2B110/2.5	EP2D-110/2.5	.110	5/32	1/2	2 1/2	1/8	100
EP2B110L/2.5	EP2D-110L/2.5	.110	5/32	1	2 1/2	1/8	100
EP2B115/2.5	EP2D-115/2.5	.115	5/32	1/2	2 1/2	1/8	100
EP2B120/2.5	EP2D-120/2.5	.120	5/32	1/2	2 1/2	1/8	100
EP2B125/2.5	EP2D-125/2.5	.125	5/32	1/2	2 1/2	1/8	100
EP2B125L/2.5	EP2D-125L/2.5	.125	5/32	1	2 1/2	1/8	100
EP2B141/4	EP2D-141/4	.141	1/4	N/A	2 1/2	1/8	100
EP2B156/4	EP2D-156/4	.156	1/4	N/A	2 1/2	1/8	100
EP2B188/4	EP2D-188/4	.188	1/4	N/A	2 1/2	1/8	100
EP2B218/4	EP2D-218/4	.218	1/4	N/A	2 1/2	1/8	100
EP2B250/2	EP2D-250/2	.250	1/8	N/A	2 1/2	1/8	100
EP2B250/4	EP2D-250/4	.250	1/4	N/A	2 1/2	1/8	100

PLATED DIAMOND & CBN GRINDING PINS



CBN TOOL NO.	DIAMOND TOOL NO.	(D) HEAD DIAMETER	(H) HEAD LENGTH	(L)	(S) SHANK	OAL	GRIT SIZE
EP4B-141/4	EP4D-141/4	.141"	1/4"	1"	1/4"	3	100
EP4B-156/4	EP4D-156/4	.156	1/4	1	1/4	3	100
EP4B-188/4	EP4D-188/4	.188	1/4	1	1/4	3	100
EP4B-218/4	EP4D-218/4	.218	1/4	1	1/4	3	100
EP4B-250/2	EP4D-250/2	.250	1/8	1	1/4	3	100
EP4B-250/4	EP4D-250/4	.250	1/4	1	1/4	3	100
EP4B-312/2	EP4D-312/2	.312	1/8		1/4	3	100
EP4B-312/4	EP4D-312/4	.312	1/4		1/4	3	100
EP4B-312/6	EP4D-312/6	.312	3/8		1/4	3	100
EP4B-375/2	EP4D-375/2	.312	1/8		1/4	3	100
EP4B-375/4	EP4D-375/4	.375	1/4		1/4	3	100
EP4B-375/6	EP4D-375/6	.375	3/8		1/4	3	100
EP4B-375/8	EP4D-375/8	.375	1/2		1/4	3	100
EP4B-500/4	EP4D-500/4	.500	1/4		1/4	3	100
EP4B-500/6	EP4D-500/6	.500	3/8		1/4	3	100
EP4B-500/8	EP4D-500/8	.500	1/2		1/4	3	100
EP4B-750/4	EP4D-750/4	.750	1/4		1/4	3	100
EP4B-750/8	EP4D-750/8	.750	1/2		1/4	3	100



CBN TOOL NO.	DIAMOND TOOL NO.	(D) HEAD DIAMETER	(H) HEAD LENGTH	(S) SHANK	OAL	GRIT SIZE
EP6B-406/6	EP6DF-406/6	.406"	3/8"	3/8"	3 3/4"	100
EP6B-437/6	EP6D-437/6	.437	3/8	3/8	3 3/4	100
EP6B-500/6	EP6D-500/6	.500	3/8	3/8	3 3/4	100
EP6B-562/6	EP6D-562/6	.562	3/8	3/8	3 3/4	100
EP6B-625/6	EP6D-625/6	.625	3/8	3/8	3 3/4	100
EP6B-687/6	EP6D-687/6	.687	3/8	3/8	3 3/4	100
EP6B-750/6	EP6D-750/6	.750	3/8	3/8	3 3/4	100
EP6B-875/6	EP6D-875/6	.875	3/8	3/8	3 3/4	100
EP6B-1000/6	EP6D-1000/6	1.000	3/8	3/8	3 3/4	100